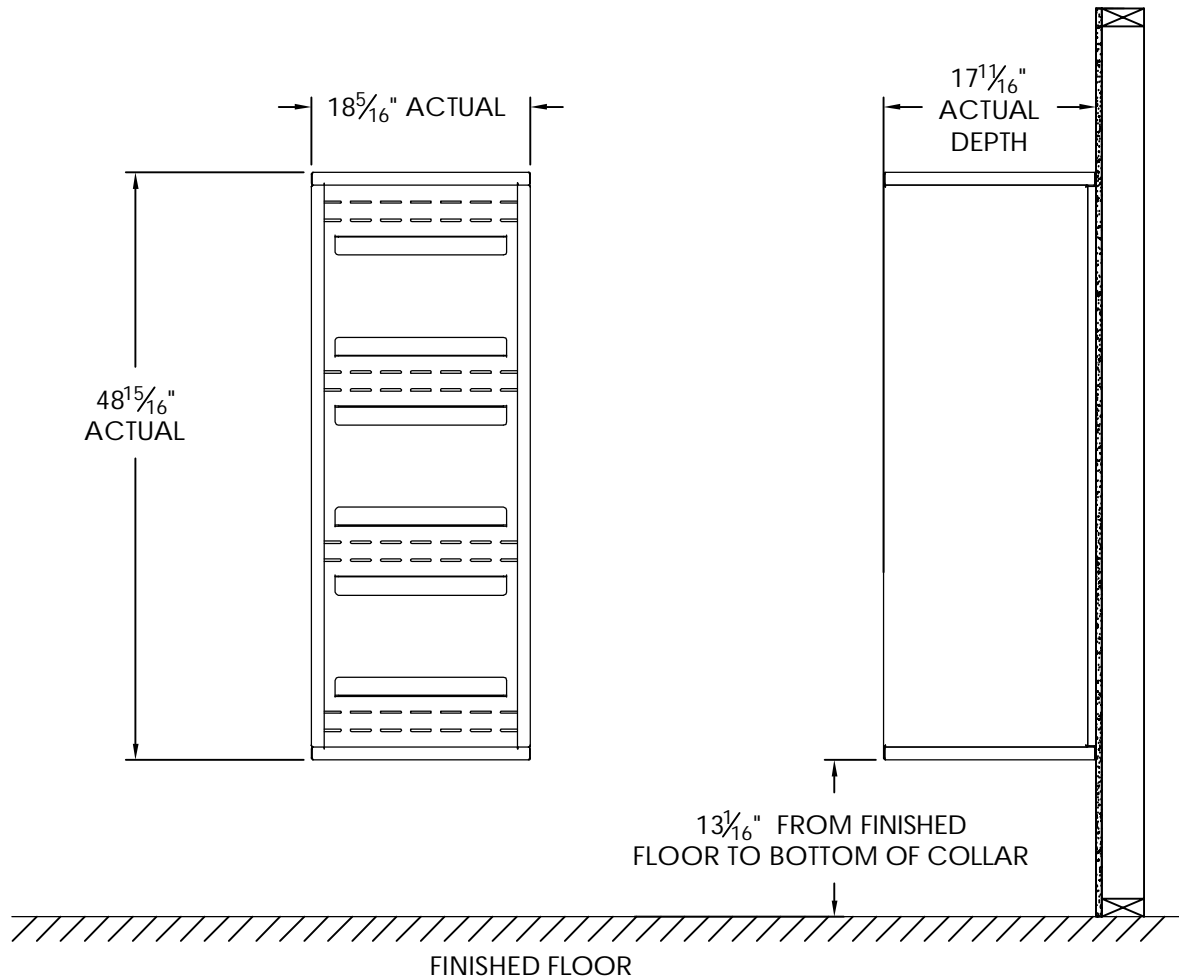


# versatile™ 4C Surface Mount Collar, SM13S



## Notes:

1. Designed to mount Florence Versatile™ 4C mailbox single column 13-High Suite modules (sold separately).
2. For use with front loading modules only.

PRODUCT SERIES: VERSATILE™ 4C SURFACE MOUNT COLLAR

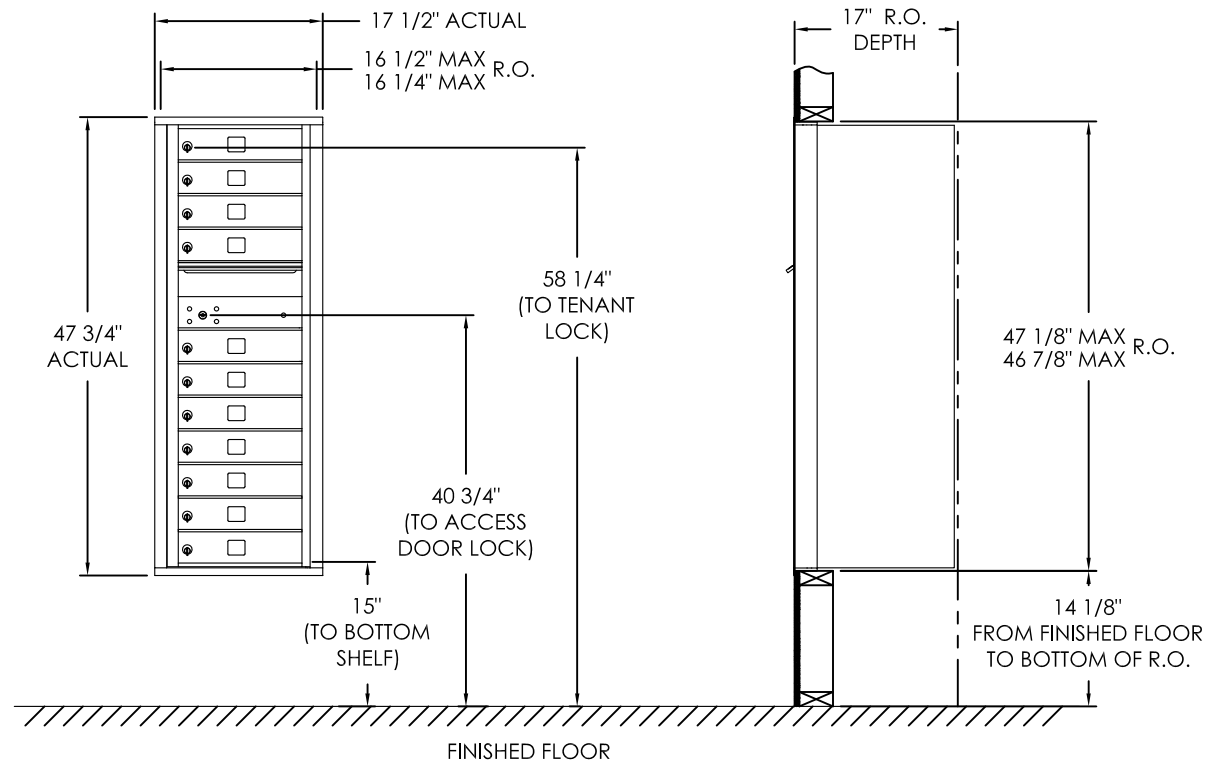
**AF FLORENCE**  
manufacturing company

5935 Corporate Drive • Manhattan, KS 66503  
www.florencemailboxes.com • (800) 275-1747

A GIBRALTAR INDUSTRIES COMPANY

MODEL	SM13S	REV	B
SCALE	NONE	LAST REV DATE	7/02/2014
DRAWING NUMBER	SM13SCS	DRAWN BY	TNS

# versatile™ 4C Mailbox, 4C13S-11



## COMPARTMENT CHART

DESCRIPTION	COMPARTMENT	COMPARTMENT SIZE	QTY.
MAILBOX	MB1	3" H x 12" W x 15" D	11
OUTGOING MAIL	OM2	6-1/2" H x 12" W x 15" D	1

### Notes:

1. This module does NOT meet USPS STD-4C installation specification requirements because there are customer compartments (interior bottom shelf) positioned less than 28" AFF.
2. This 4C mailbox can be used for private applications.
3. The rough opening width for multi-unit 4C installations is provided using the Florence configurator: [www.florencemailboxes.com/configurator](http://www.florencemailboxes.com/configurator).

PRODUCT SERIES: VERSATILE™ 4C FRONT LOAD MAILBOX

**FLORENCE**  
**CORPORATION**

5935 Corporate Drive • Manhattan, KS 66503  
 800.275.1747 • [www.florencemailboxes.com](http://www.florencemailboxes.com)

MODEL 4C13S-11	REV C
SCALE NONE	LAST REV DATE 07/09/19
DRAWING NUMBER 4C13S-11CS	DRAWN BY RAK